


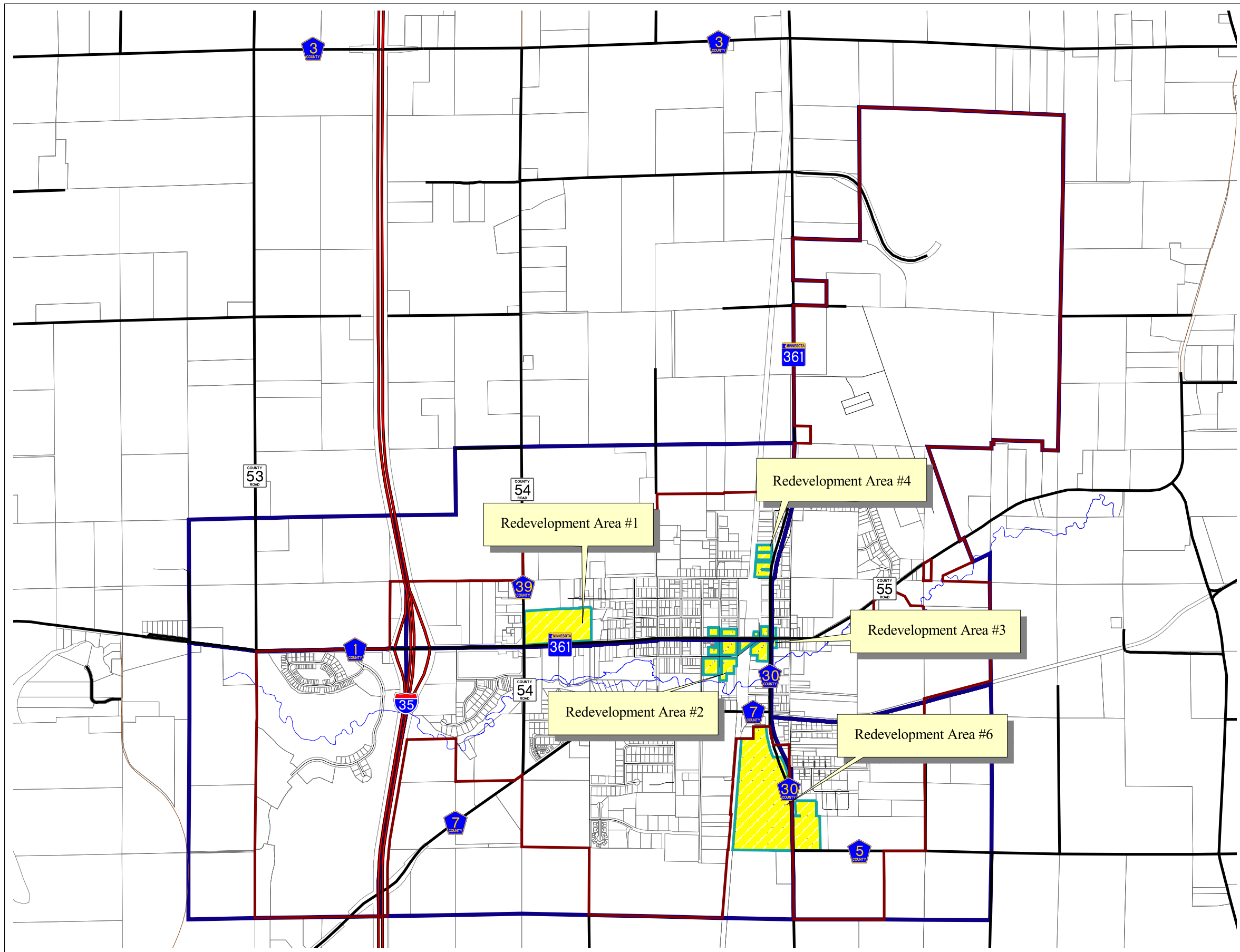


# City of Rush City Redevelopment Areas Map 11-1

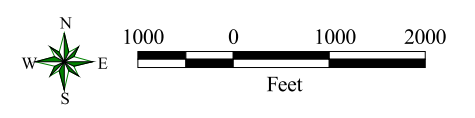
## Legend

-  Redevelopment Site
-  Land Use Districts
-  City Limits

- Redevelopment Area #1  
Fairgrounds.
- Redevelopment Area #2  
Land O' Lakes Building/site.
- Redevelopment Area #3  
General Business District or "Downtown".
- Redevelopment Area #4  
Industrial uses along North Highway 361 (Forest Blvd)
- Redevelopment Area #5  
Scattered manufactured homes located in single-family districts throughout the city.
- Redevelopment Area #6  
The area on the south central side of the community located between the Burlington Northern Railroad and County Road 30.



Map Date: December 25, 2007



Scale: 1 inch = 2000 feet  
R.F.: 1 : 24,000

